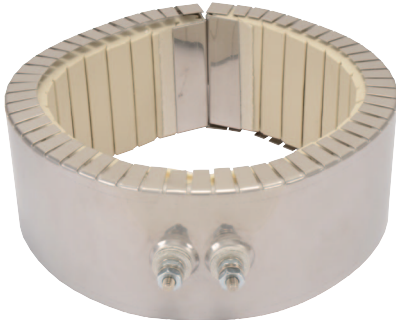


## Terminations

### Ceramic Band Type T2 – Screw Terminals

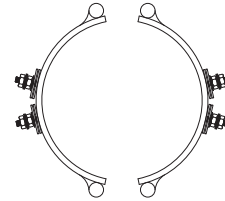
Type T2 Screw Terminals are available with all types of insulation, construction styles, and clamping variations. They are considered to be standard on most band heaters under 2" in width unless otherwise specified. 10-32 post terminals are standard.



#### One-Piece Band

**Standard Termination Location:**  
opposite the gap; center of width

- \* **Minimum Inside Diameter:** 2" (50.8 mm)
- \* **Minimum Width:** 1" (25.4 mm)
- \* **Maximum Volts/Amps:** 480VAC/25A



#### Two-Piece Band

**Standard Termination Location:**  
center of each half; center of width

- \* **Minimum Inside Diameter:** 4" (101.6 mm)
- \* **Minimum Width:** 1" (25.4 mm)
- \* **Maximum Volts/Amps:** 480VAC/25A each half

**Note:** Not available for  
Reverse Construction

### Ceramic Band Type T3 – Screw Terminals

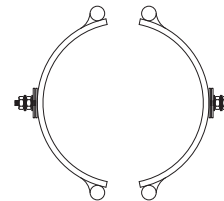
Type T3 Screw Terminals are available with all types of insulation, construction styles, and clamping variations. They are considered to be standard on most band heaters unless otherwise specified. For use with leads, crimp terminals, or bus bars.



#### One-Piece Band

**Standard Termination Location:**  
opposite the gap; across center of width

- \* **Minimum Inside Diameter:** 2" (50.8 mm)
- \* **Minimum Width:** 2" (50.8 mm)
- \* **Maximum Volts/Amps:** 480VAC/25A



#### Two-Piece Band

**Standard Termination Location:**  
center of each half; across center of width

- \* **Minimum Inside Diameter:** 4" (101.6 mm)
- \* **Minimum Width:** 2" (50.8 mm)
- \* **Maximum Volts/Amps:** 480VAC/25A each half

**Available on Reverse Band**

- \* **Minimum Inside Diameter:** 5-1/2" (139.7 mm)