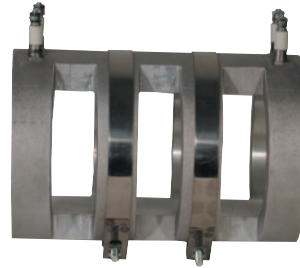


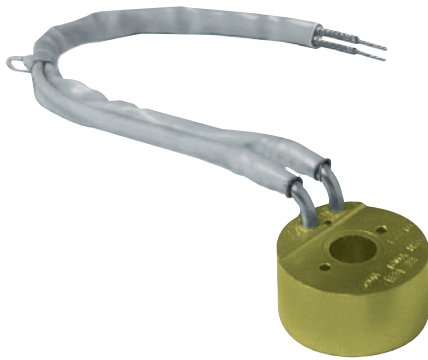
### Specialty Cast-In Aluminum and Bronze Heaters Used in Plastics Processing Equipment



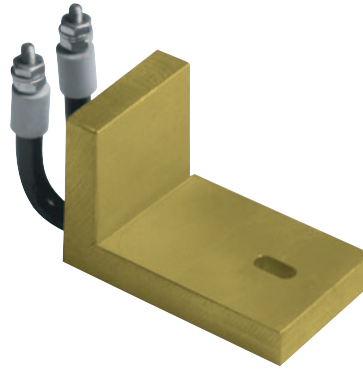
*Cast Bronze Nozzle Heater Bushings For Runnerless Molding*



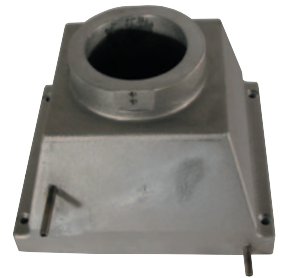
*Vented Barrel Heater*



*Ring Heaters*



*"L" Shaped Heater*



*Hopper Feed Cooler*



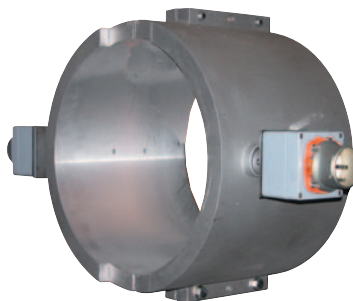
*Large Holes for Vented Barrels*



*Feed Throat Cooler*



*Feed Throat Cooler*



*Rugged Electrical Terminal Housings With Meltric® Receptacles*